



Sedera Cheat Sheet

Here is a list of words we want you to use when telling the world about Sedera.



Medical Cost Sharing

A membership-based non-insurance arrangement established for the purpose of sharing legitimate health care expenses between Members.



Membership Guidelines

What every Member is asked to read and sign acknowledging they understand how sharing and the Sedera community functions.



Initial Unshareable Amount (IUA)

The amount that Members are required to bear on their own prior to any amount that may be eligible for sharing; IUAs are applied per injury or illness.



Monthly Contribution

The monthly cost, per Member, contributed to the Needs of the Community.



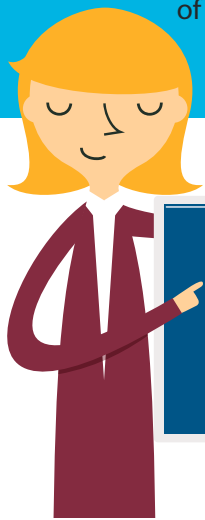
Need

All of the medical expenses related to a single accident or illness that exceeds the Member's Initial Unshareable Amount (IUA).



Share/Sharing

When the Medical Cost Sharing community steps in to give toward the costs of your Medical Need. (*Never say "cover" or "coverage")



Please steer clear of these words:

- Coverage
- Benefits
- Deductible
- Plan
- Major Medical
- Policy
- Catastrophic
- Out-of-Pocket
- Premiums
- Reimbursement
- Employer-sponsored
- Arrangement
- Program